



*Trend of the
Vintage Moda*

Banda 

a name professionally known for high grade
leather watch straps, cases & display boxes



BANDA, with over three decades of watchstrap manufacturing experience has earned a high reputation internationally as a high-grade leather watchstrap maker. Established in 1978, the company dedicated itself as the main partner with a strap company in Switzerland. With traditional Swiss leather craft expertise assisted by revolutionary Swiss machinery, BANDA is committed to being a prime player in the production of leather watchstraps that has ever since been appreciated by many prestigious global watch makers and watchstrap aficionados.

Leather working is one of the oldest skills originating from the ancient world as animal hides had many uses for primitive humans. The primary owner of BANDA, Frankie Tso, is a lover of leather working as well as watches and this sets the beginning of a successful watchstrap company. He has devoted a significant amount of time developing and perfecting his skill in watchstrap making as well as developing his own machines and tools to help with production. For Frankie Tso crafting leather watchstraps, while requiring a high degree of technical knowledge, skill and patience, is also an art.

The firm is always on its toes, keeping up with the latest styles and trends. Our clients the world over are the fashion-conscious men and women who are very particular about their watches - not just about the timepiece itself but also the watch strap material, its color, design, pattern and even stitching. Every client has his or her own preferences, which keeps BANDA's R&D team busy coming up with a constant flow of new ideas, from contemporary to vintage designs. The factory's workforce includes many of the industry's most skilled leather workers, who specialize in producing perfectly stitched products which are practical as well as appealing to the eye.

BANDA offers a wide variety of watchstrap choices to compliment any watch designs, from classic and vintage timepieces to modern high-tech multi-function chronographs. Offering the finest genuine leathers from alligator, crocodile, lizard, teju, shark, stingray, ostrich, and calf, combined with meticulous handcrafting, result in refined finished products like no other. High quality materials like superior European leather, tanned naturally, combined with stainless steel and nickel free buckles allow wearing comfort for all, including those with allergies. A nearly unlimited combination of styles, colors, and contours ensure the perfect fit for your needs.

BANDA has an admirable international reputation for quality products at a reasonable price and is your reliable source for beautiful straps.

TABLE OF CONTENT



1	Company Profile	17	Vintage Style	35	REPTILE GRAINED LEATHER	47	ELEGANT LEATHER	58	SPECIALITY COLLECTION
4 - 7	Banda Gallery	18	PCDS Double Stitched Carbon MIL style	36	NA Square Allig	48	Buffalo Patterned Crystal Calf	59	Bangle Pilot Strap Sandwich
8	VINTAGE MODA	19	PANC Carbon Fiber	37	Lack Square Croco Vintage NA Allig	49	Diamond Moda	60	Polo Diamond Polo Satin
9	Box Stitch Rubberized Kelvar-tech PANI Sandy Horse	20	PANRE Vintage Buffalo Historic Flat PANC Sione	38	Lake Croco	50	Soft Leather	61	Canvas Stripe Nylon
10	Submariner WW2	21	PANC Perforated PANF Square Pattern	39	Baby Allig Nile Allig	51	Dylan Lack	62	Polo Flamen NATO
11	ENZO Smooth Jacket ENZO Cowboy Stripe	22	PANC Smooth Jacket PANI Vintage Jacket	40	Nile Croco WV Allig	52	Lux Buffalo WP Soft Slope end	63	Straps With AD Clasp Rubber & Leather With BD Clasp
12	PANI Key Hole PRID	23	PFDS Double Stitched German Soft	41	Matt Nile Allig K. Island Mini Allig	53	WP Soft Pearlized	64	T-padded
13	PD Box PANIJ	24	PANC Canyon	42	Matt Argentine Teju Argentine Teju	54	Vintage Military Style Matt Gemini	65	Lux Croco Applique
14	GM1 German Military GM2 German Military	25	PANI Elsa PANI Stone	43	Indian Python African Cobra	55	Lamb Calf Charly	66	Solid Lug
15	PIHS Rouille Cowboy Stripe PIS1 Black Cowboy Stripe PIS2 Black Cowboy Stripe	26	PANI Canyon PANC Polo Croc	44	Small JP Lizard Artic Shark	56	Master MIL Charly	67	Contemporary Cuff Bands
16	PANX Crazy Horse Cross Stitches MILBN German Military Style	27	Cross Over Rivolo	45	Pastel Gator Pastel Gator Matt	57	Master	68	Contemporary Cuff Bands
		28	EXOTIC STRAPS	46	Lux Allig African Ostrich			69	Hand Stitched
		29	Genuine Alligator Special Colors Genuine Alligator Standard Colors					70	Silicon - Straight Lines
		30	Genuine Caimen Crocodile Genuine Alligator, Glazed					71	Pan Style
		31	PBY Genuine Crocodile Matte Hornback Croc					72	Deployant Straps Deployment Buckles
		32	Python Snake Genuine Shark					73	Buckles Accessories
		33	Genuine Ostrich Matte Genuine Lizard					74	Various Linings Wooden Display
		34	Stingray					75	Watch Strap Display Case

BANDA GALLERY



Take a glance at some of our different designs and see how we build quality straps from the concept idea to the final production pieces

BANDA GALLERY



Take a glance at some of our different designs and see how we build quality straps from the concept idea to the final production pieces

BANDA GALLERY



Take a glance at some of our different designs and see how we build quality straps from the concept idea to the final production pieces

BANDA GALLERY



Take a glance at some of our different designs and see how we build quality straps from the concept idea to the final production pieces

VINTAGE

moda

Straps in this section are designed with a combination of historic culture, fashion and sustainability which we mold into a unifying vision of beauty so that every watch lover can appreciate their timepieces to their fullest extent.

Box Stitch Rubberized Kelvar-tech

Vintage moda stands for personality and exclusivity. It is reflected by this black rubberized strap that comes with different stitching colors of your choice.

PIBX-112Z-031
Black Stitched

PIBX-112Z-031
Red Stitched

PIBX-112Z-031
Yellow Stitched

PIBX-112Z-031
White Stitched

PIBX-112Z-031
**Black Rubberized
Kelvar-tech
(Different Stitching Colors)**

PANI Sandy Horse

Vintage fashion is always in vogue with this very matte material and the strap is made in a thick and flat padded style.

PANI-112Z-111
Black

PANI-112Z-112
D. Brown

PANI-112Z-113
L. Brown

PANI-112Z-114
L. Grey

PANI-112Z-115
White

PANI-112Z-115
**White
Sandy Horse**

VINTAGE

moda

Submariner

This vintage strap comes with a stunning hugh submarine buckle and the historic PIG submarine cutout is no stranger to watch enthusiasts.



PANI-XXV-03
Vintage Stained Leather

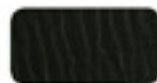


PLAS-508-03
Brown Cowboy Stripe

WW2

VINTAGE
moda

PLAS-508-01
Black



PLAS-508-02
D. Brown



PLAS-508-03
Brown



PLAS-508-04
Rouille



ENZO-514-01
Black



ENZO-514-02
D. Brown



ENZO-514-03
Honey



ENZO-514-04
Hazel



ENZO-514-05
Grey



ENZO-514-02
D.Brown Smooth Jacket

ENZO Smooth Jacket

Offering maximum quality and latest fashion in our exclusive selection. Vintage fashion is always in vogue, only the coolest watch collectors are fervent followers of this trend. Different stitching colors brings many fantastic ideas to play with the watch dials and hands colors.

ENZO Cowboy Stripe



ENZO-508-04
Rouille Cowboy Stripe

ENZO-508-01
Black



ENZO-508-02
D. Brown



ENZO-508-03
Brown



ENZO-508-04
Rouille



PANI Key Hole

Vintage fashion is always in vogue, only the coolest watch collectors are fervent followers of this trend.

PKEY-449-01
Black

PKEY-449-02
D. Brown

PKEY-449-03
Rouille

PKEY-449-04
Golden Brown



PKEY-449-02
D. Brown Vintage Jacket



PRID-430-03
L. Brown
German Soft Leather

PRID

PRID-430-01 Black		PRID-430-06 P. Blue	
PRID-430-02 Rouille		PRID-430-07 Milky	
PRID-430-03 L. Brown		PRID-430-08 D. Brown	
PRID-430-04 Olive		PRID-430-09 Bone	
PRID-430-05 L. Pink		PRID-430-10 Chocolate	

VINTAGE
moda

PD Box

Different stitching colors brings many fantastic ideas to play with the watch dials and hands colors.

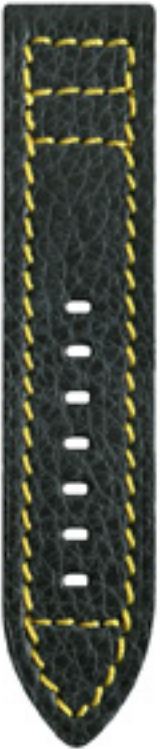
PDBX-468-01
Black

PDBX-468-02
Brown

PDBX-468-03
D. Blue

PDBX-468-05
D. Chocolate

PDBX-468-06
Rouille



PDBX-468-01
Black Thai Shrunk

PANIJ-508-01
Black

PANIJ-508-02
D. Brown

PANIJ-508-03
Brown

PANIJ-508-04
Rouille

PANIJ



PANIJ-508-04
Rouille Cowboy stripe



- GM2-190H-01 Black
- GM2-190H-02 Brown
- GM2-190H-03 L. Brown
- GM2-190H-04 Rouille
- GM2-190H-05 D. Blue
- GM2-190H-06 Green
- GM2-190H-07 Red

GM2
German Military

The perforated holes on the leather and the rivets together no wonder is the best choice for the pursuit of advanced taste.

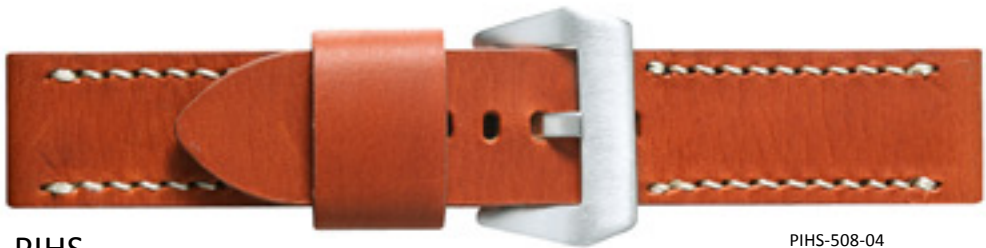


GM1
German Military

Another traditional military style in a traditional elegance

GM1-508-01
Black Cowboy Stripe

- GM1-508-01 Black
- GM1-508-02 D. Brown
- GM1-508-03 Brown
- GM1-508-04 Rouille



PIHS
Rouille Cowboy Stripe

PIHS-508-04
Rouille Cowboy Stripe
(Half Way Stitched)



PIS1
Black Cowboy Stripe

PIS1-508-01
Black Cowboy Stripe
(White & Red Stitched)



PIS2
Black Cowboy Stripe

PIS2-508-01
Black Cowboy Stripe
(White & Blue Stitched)

- 508-01 Black
- 508-02 D. Brown
- 508-03 Brown
- 508-04 Rouille

VINTAGE
moda

Offering maximum quality and latest fashion in our exclusive selection. Straps made with Italian leather with different stitching patterns are always compatible with sporty and heavy watches.

PANX Crazy Horse Cross Stitches

PANX-509-01
Black



PANX-509-03
L.Brown



PANX-509-02
Brown



MILBN German Military Style

Traditional Military style in a vintage elegance. Offering maximum quality and latest fashion in our exclusive selection, this German Military Style in the Vintage moda is no wonder the best choice for the pursuit of advanced taste.

MILBN-F1
Naturel Beige

MILBN-514-03
Brown Smooth Jacket



PANI-263-02
Rouille Dublin

PANI-468-02
D. Brown
Thai Shrink



Vintage Style

VINTAGE
moda



MIL-518-01
Black Carbon
White Stitched



MIL-518-01
Black Carbon
Yellow Stitched



MIL-518-01
Black Carbon
Red Stitched



MIL style

This military style is always in compatible with high-tech chrono watches



MIL-518-01
Black Carbon
Blue Stitched

PCDS Double Stitched Carbon

The double stitched pattern is an exciting feature that always gives additional elegance to a strap



PCDS-518-01
Black Carbon
Double Blue Stitched



PCDS-518-01
Black Carbon
Double Yellow Stitched



PCDS-518-01
Black Carbon
Double White Stitched



PCDS-518-01
Black Carbon
Double Red Stitched



PANC Carbon Fiber

These straps are made from technical and high performance leather that has a high abrasion resistance



PANC-518-01
Black Carbon



PANC-527-01
Black 3-D

VINTAGE
moda



PANRE-472-02
Brown
Vintage Buffalo

PANRE
Vintage Buffalo
Historic Flat

A strap filled with history, the world war II style made of vintage buffalo.



PANRE-472-01
Black

PANRE-472-02
Brown

PANC
Sione

This leather outlines a rocky buffalo grain pattern and is a new and exciting material for people with an adventurous style.



PANC-515-01
Black

PANC-515-02
D. Brown

PANC-515-03
Brown

PANC-515-04
Beige

PANC-515-05
D. Khaki



PANC-515-02
D. Brown
Sione

PANC
Perforated

This stylish sporty model is always in compatible with high-tech chrono watches



PANC-190H-01
Black

PANC-190H-02
Brown

PANC-190H-04
Rouille

PANC-190H-05
D. Blue

PANC-190H-06
Green

PANC-190H-07
Red

PANC-190H-08
M. Blue

PANC-190H-10
White

PANC-190H-01
Black Perforated Leather



PANF
Square Pattern

PANF-400-02
Brown Square Pattern



PANF-400-01
Black

PANF-400-02
D. Brown

PANF-400-03
L. Brown

PANF-400-04
Reddish Brown

VINTAGE
moda

PANC Smooth Jacket

This vintage matt leather no wonder is the best choice for the persuit of advanced taste.

PANC-514-01
Black

PANC-514-02
D. Brown

PANC-514-03
Honey Brown

PANC-514-04
Hazel

PANC-514-05
Grey



PANC-514-02
D. Brown
Smooth Jacket

VINTAGE
moda

PANI-449-01
Black



PANI-449-03
Rouille



PANI-449-02
D. Brown



PANI-449-04
Golden Brown



PANI-449-02
D. Brown
Vintage Jacket

PANI
Vintage Jacket



PFDS Double Stitched
German Soft

Soft and in a fine texture, this strap outlined a traditional look for the vintage fashion.



PFDS-430-03
L. Brown
German Soft

430-01
Black

430-02
Rouille

430-03
L. Brown

430-04
Olive

430-05
L. Pink

430-06
P. Blue

430-07
Milky

430-08
D. Brown

430-09
Bone

430-10
Chocolate

PAN-430-02
Rouille
German Soft



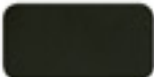


PANC-409-01
Black
Canyon

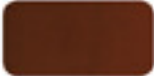
PANC Canyon

Vintage moda stands for personality and exclusivity and this oiled leather expresses it well.

409-01
Black



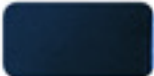
409-02
Brown



409-03
L. Brown



409-04
D. Blue



54G3H-409-03
L. Brown Canyon

PANI-539-01
Black Elsa



PANI-539-03
Tan



PANI-539-02
Brown



PANI-539-04
Olive



PANI Elsa

This vintage buffalo has a fine buffalo grain and is a good choice for the vintage moda.

PANI-539-01
Black Elsa



PANI-530-02
D. Brown Stone



PANI Stone

This Rocky buffalo is an exciting material for the adventurous style.

PANI-530-01
Black



PANI-530-02
D. Brown



PANI-530-04
Rouille



PANI-530-05
Orange



PANI-530-06
Red



PANI-530-07
M. Blue



PANI-530-08
Purple



PANI-530-10
White

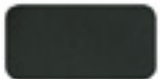


VINTAGE
moda

PANI-409-03
L. Brown Canyon



PANI-409-01
Black



PANI-409-03
L. Brown



PANI-409-02
Brown



PANI-409-04
D. Blue



PANI Canyon

Offering maximum quality and latest fashion in our exclusive selection, Canyon in the Vintage moda is no wonder the best choice for the persuit of advanced taste

VINTAGE
moda

PANC Polo Croc

Vintage fashion is always in vogue with this unique matte croco pattern.

PANC-546-01
Black



PANC-546-03
L. Brown



PANC-546-02
D. Brown



PANC-546-04
Grey



PANC-546-05
Beige



PANC-546-02
D. Brown
Polo Croc Matt

Cross Over

Combination of leathers to create stylish pattern brings many fantastic ideas to play with the watch dials and hands colors.



PFCO-R4
Red

Rivolo



PANC-521-02
D. Brown



PANC-521-01
Black



PANC-521-01
Black



handmade EXOTIC STRAPS

Genuine Alligator Special Colors

Each individual strap is carefully hand-crafted through numerous operational procedures. Skins come in a wide array of colors or any custom colors.

54G-113B-900
D. Silver



54G-113B-901
D. Gold



54G-113B-902
Pearl Green



54G-113B-903
Pearl Pink



54G-113B-904
Pearl Beige



54G-113B-905
Pearl White



54G-113B-901
D. Gold



54G-113BU-30
Honey Brown



Genuine Alligator Standard Colors

54G-113BU-01
Black



54G-113BU-17
Red



54G-113BU-02
D. Brown



54G-113BU-18
Orange



54G-113BU-04
Reddish Marron



54G-113BU-19
Pink



54G-113BU-10
D. Gray



54G-113BU-30
Honey Brown



54G-113BU-11
White



54G-113BU-91
D. Blue



54G-113BU-99
Chocolate



EXOTIC

leather

Genuine Caimen Crocodile

- 71C-113-01 Black
- 71C-113-02 D. Brown
- 71C-113-07 Bordeau
- 71C-113-09 D. Grey
- 71C-113-11 D. Blue
- 71C-113-12 Rouille
- 71C-113-14 Red
- 71C-113-25 Navy Blue
- 71C-113-34 D. Pink
- 71C-113-40 White
- 71C-113-45 Sky Blue



Genuine Alligator, Glazed

A true example of prestigious grace. Each individual strap is carefully handcrafted through numerous operational procedures to fulfill your ultimate requirement. Skins come in a wide array of colors or any custom colors.

- 54G-113A-01 Black
- 54G-113A-02 D. Brown
- 54G-113A-03 Beige
- 54G-113A-06 Rouille
- 54G-113A-08 Rosa
- 54G-113A-11 M. Brwon
- 54G-113A-13 D. Blue
- 54G-113A-14 Bordeau
- 54G-113A-21 M. Grey
- 54G-113A-22 Red
- 54G-113A-23 M. Blue



PBY
Genuine Crocodile Matte

Genuine crocodile for the ultimate in sophistication. Each individual strap is carefully handcrafted.

- PBY-113M-01 Black
- PBY-113M-03 Rouille
- PBY-113M-04 Mid Brown
- PBY-113M-06 Chocolate



PBY-113M-01
Black Crocodile Matte

EXOTIC
leather

PANC-113FH-03
M. Brown
Hornback Croc

- PANC-113FH-01 Black
- PANC-113FH-02 D. Brown
- PANC-113FH-03 M. Brown
- PANC-113FH-04 Gold
- PANC-113FH-07 Red
- PANC-113FH-08 White
- PANC-113FH-09 Rosa
- PANC-113FH-10 Orange Tan
- PANC-113FH-11 Purple



Hornback Croc

Very special and unique, this luxury hornback croco watchstrap as it is called has visible bony ridges that gives a wild look.

PANC-422-07 Sky Blue		PANC-422-01 Black	
PANC-422-08 Red		PANC-422-02 D. Brown	
PANC-422-09 Pink		PANC-422-03 Blue	
		PANC-422-04 Gold	
		PANC-422-05 White/Black	
		PANC-422-06 Cream	

Python Snake

Snake skin is the most popular look for the season and python that has pronounced scales is snake of choice.



PANC-422-05
White/Black

EXOTIC
leather

115-129-09 Grey
115-129-10 Bordeau
115-129-11 Black
115-129-12 D. Brown
115-129-13 D. Blue
115-129-14 Honey
115-129-15 L. Green
115-129-16 D. Green
115-129-17 L. Blue
115-129-18 Red
115-129-19 Yellow

Genuine Shark

Sporty and water-resistant with contrasted stitching. Chunky padded design is always in compatible with any high-tech chrono watches.



115-129-13
D. Blue

PANF-367-01 Black
PANF-367-02 D. Brown
PANF-367-03 Chestunt
PANF-367-04 D. Blue
PANF-367-06 Red
PANF-367-07 Yellow
PANF-367-09 L. Blue
PANF-367-10 Chocolate
PANF-367-12 Pink
PANF-367-13 Purple
PANF-367-15 M. Blue
PANF-367-16 Bordeau
PANF-367-17 D. Green
PANF-367-18 Olive Green
PANF-367-20 White

Genuine Ostrich Matte

Traditional elegance through generations. Soft and supple nature of Ostrich stands for wearing comfort.



PANF-367-03
Chestunt

54G-114-01 Black
54G-114-02 D. Brown
54G-114-03 L. Brown
54G-114-04 Gold
54G-114-06 Rouille
54G-114-07 Bord
54G-114-08 Red
54G-114-09 Green
54G-114-11 L. Blue
54G-114-12 D. Blue
54G-114-14 White
54G-114-15 Violet
54G-114-16 D. Red















Genuine Lizard

Exemplary beauty for casual and gala moments. This small lizard grain is a trendy pattern for many branded watches.



54G-114-07
Bordeau

Jewel (non-polished) colors

PANC-408B-01 Black	
PANC-408B-02 Brown	
PANC-408B-03 Navy Blue	
PANC-408B-04 Bordeau	
PANC-408B-05 Pearl White	
PANC-408B-06 Li Pink	
PANC-408B-07 Pink	
PANC-408B-08 Rosa	
PANC-408B-09 Red	
PANC-408B-10 L. Blue	
PANC-408B-11 Yellow	
PANC-408B-12 Apple Green	
PANC-408B-13 D. Red	
PANC-408B-14 Purple	

Stingray

Watch strap made in stingray is gaining in popularity due to its unique beauty. Color treatment and special polishing techniques make the final leather appear like luminous pearls.

EXOTIC
leather



PANC-408-03
Blue, Flat Polished

PANC-408A-03
Blue, Semi Polished

REPTILE
grained leather





54G-443-01
Black

NA Square Allig

An elegant and beautiful alligator pattern, which is available in a wide spectrum of colors. A style that matches well with every timepiece.

54G-443-01 Black		54G-443-08 Ocean Blue		54G-443-18 D. Blue		54G-443-28 Blue	
54G-443-02 D. Brown		54G-443-09 L. Blue		54G-443-19 Grey		54G-443-29 Royal Blue	
54G-443-03 L. Purple		54G-443-10 Navy Blue		54G-443-20 Chocolate		54G-443-30 D. Indigo	
54G-443-04 Brown		54G-443-11 Green		54G-443-21 D. Grey		54G-443-31 Pale Green	
54G-443-06 Red		54G-443-13 Tan		54G-443-22 L. Brown		54G-443-32 D. Green	
54G-443-07 Pink		54G-443-14 Beige		54G-443-23 Orange		54G-443-33 D. Purple	
		54G-443-15 Ivory		54G-443-25 D. Pink		54G-443-35 Yellow	
		54G-443-17 White		54G-443-27 Purple		54G-443-36 L. Pink	

REPTILE
grained leather

71C-443X-01
Black



71C-443X-02
Brown



71C-443X-06
Red



71C-443X-07
Pink



71C-443X-10
L. Blue



71C-443X-11
Green



71C-443X-12
Purple



71C-443X-17
White



71C-443X-19
Grey



71C-443X-35
Yellow



Lack Square Croco

This unique and beautiful artisan-crafted material is a fantastic material to match with today's jewelry watches.



71C-443X-07
Pink

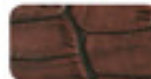
71C-547-01
Black



71C-547-02
D. Brown



71C-547-03
Tan



71C-547-04
White



71C-547-05
Blue



71C-547-06
Green



71C-547-07
Pink



71C-547-08
Bord



71C-547-09
Ivory



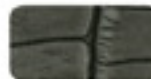
71C-547-10
Yellow



71C-547-11
Rouille



71C-547-12
Gray



Vintage NA Allig

Vintage fashion is always in vogue, only the coolest watch collectors are fervent followers of this trend.



71C-547-02
D. Brown



PANC-533-01 Black		PANC-533-07 D. Blue	
PANC-533-02 Brown		PANC-533-08 Red	
PANC-533-03 L. Brown		PANC-533-09 Beige	
PANC-533-04 Gray		PANC-533-10 Yellow	
PANC-533-06 Chocolate		PANC-533-11 Orange	

Lake Croco






This large and small scaled croco pattern is a trendy material used for classic timepieces as well as high-tech chrono watches.

PANC-533-01
Black



REPTILE
grained leather



71C-294B-01 Black	
71C-294B-02 L. Brown	
71C-294B-03 Mid Blue	
71C-294B-04 D. Brown	
71C-294B-05 Rouille	

Baby Allig

Durable elegance is outlined by this beautiful square gator pattern. A style for classic, chrono and vintage watches.



71C-294B-04
D. Brown

Nile Allig

71C-254-01 Black		71C-254-12 L. Red	
71C-254-02 D. Brown		71C-254-13 Mid Blue	
71C-254-03 Brown		71C-254-14 P. Blue	
71C-254-04 L. Brown		71C-254-15 White	
71C-254-05 Red		71C-254-16 L. Blue	
71C-254-06 Green		71C-254-17 Sky Blue	
71C-254-07 D. Blue		71C-254-18 P. Purple	
71C-254-08 Rouille		71C-254-19 Pink	
71C-254-09 Chocolate		71C-254-20 P. Green	
71C-254-10 Yellow		71C-254-21 Beige	
71C-254-11 Orange			



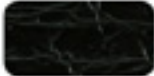
71C-254-07
D. Blue



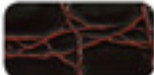
Nile Croco Flat and slim strap made with this matt croco patterned leather, a basic style for the traditional watches.

71G-253-04
L. Brown

71G-253-01
Black



71G-253-02
D. Brown



71G-253-03
Brown



71G-253-04
L. Brown



71G-253-05
Red



71G-253-06
Green



71G-253-07
D. Blue



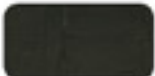
71G-253-09
Orange



71G-253-12
P. Blue



71C-168-01
Black



71C-168-02
Tan



71C-168-03
D. Brown



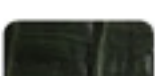
71C-168-04
Gold



71C-168-05
Rouille



71C-168-06
Green



71C-168-07
Bordeau



71C-168-08
D. Blue



71C-168-10
D Gray



WV Allig

Elegantly padded in a classical matt croco pattern. Contemporary style adapted to the spirit of the time.



71C-168-05
Rouille



Matt Nile Allig

Matt leather in croco and gator pattern is a prime player of trendy material used for classic timepieces as well as chronos.

71C-440-03
Brown

71C-440-01
Black



71C-440-02
Chocolate



71C-440-03
Brown



71C-440-04
Tan



71C-440-05
Rouille



71C-440-06
Green



71C-440-07
P. Green



71C-440-08
Blue



71C-440-09
M. Blue



71C-440-10
P. Blue



71C-440-11
L. Purple



71C-440-12
L. Camel



K. Island Mini Allig

71C-401-01
Black



71C-401-02
D. Brown



71C-401-03
L. Brown



71C-401-04
Rustic Brown



71C-401-05
D. White



71C-401-06
L. Blue



71C-401-03
L. Brown

REPTILE
grained leather



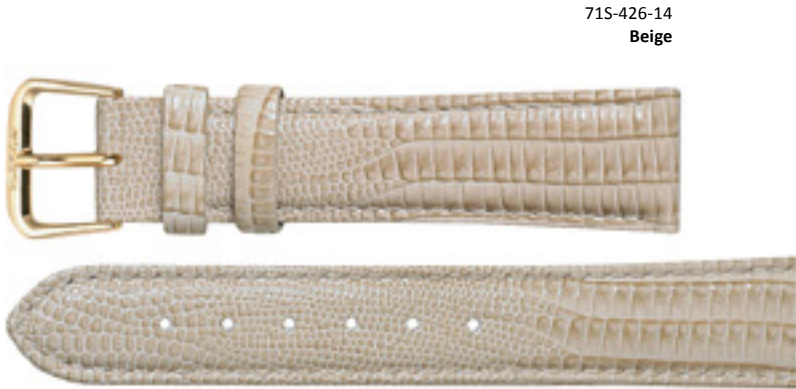
- 71S-439-01
Black
- 71S-439-02
Chocolate
- 71S-439-03
Cognac
- 71S-439-04
Bordeau
- 71S-439-05
Purple
- 71S-439-06
Tan
- 71S-439-07
Red
- 71S-439-09
Sky Blue
- 71S-439-10
P. Blue
- 71S-439-11
Rosa

Matt Argentine Teju

Slightly padded in a fine Teju pattern that matches creation for any classy watches.



71S-439-02
Chocolate



71S-426-14
Beige

Argentine Teju (slightly shiny)

- | | |
|-------------------------|-------------------------|
| 71S-426-01
Black | 71S-426-09
Sky Blue |
| 71S-426-02
Chocolate | 71S-426-10
P. Blue |
| 71S-426-03
Cognac | 71S-426-12
Pink |
| 71S-426-04
Bord | 71S-426-13
L. Purple |
| 71S-426-05
D. Purple | 71S-426-14
Beige |
| 71S-426-06
Tan | 71S-426-15
Grey |
| 71S-426-07
Red | 71S-426-16
White |
| 71S-426-08
Yellow | 71S-426-17
D. Blue |

- 71C-448-01
Black
- 71C-448-02
D. Brown
- 71C-448-03
Orange
- 71C-448-04
Purple
- 71C-448-05
L. Blue
- 71C-448-06
Pink
- 71C-448-07
Beige
- 71C-448-08
White
- 71C-448-09
Purple
- 71C-448-10
L. Brown
- 71C-448-11
L. Green

Indian Python

Wild snake pattern is a trendy and fashionable material for today's watches.



71C-448-01
Black



71C-453-09
Cognac

African Cobra

- | | |
|------------------------|----------------------|
| 71C-453-01
Black | 71C-453-04
Red |
| 71C-453-02
D. Brown | 71C-453-08
Pink |
| 71C-453-03
Blue | 71C-453-09
Cognac |

REPTILE
grained leather

- 71S-103-01
Black
- 71S-103-02
Brown
- 71S-103-03
Gray
- 71S-103-04
Bordeau
- 71S-103-05
L. Brown
- 71S-103-08
D. Blue
- 71S-103-09
Gold
- 71S-103-10
White
- 71S-103-11
Gold
- 71S-103-24
Pink



71S-103-11
Gold

71S-210-01
Black

71S-210-02
D. Brown

71S-210-03
D. Blue

71S-210-04
Honey

71S-210-05
Green

71S-210-06
D. Green

71S-210-07
L. Blue

71S-210-08
Red

71S-210-09
Gray

71S-210-10
Bordeau

71S-210-11
Yellow

- 71S-210-01
Black
- 71S-210-02
D. Brown
- 71S-210-03
D. Blue
- 71S-210-04
Honey
- 71S-210-05
Green
- 71S-210-06
D. Green
- 71S-210-07
L. Blue
- 71S-210-08
Red
- 71S-210-09
Gray
- 71S-210-10
Bordeau
- 71S-210-11
Yellow



71S-210-07
L. Blue

Small JP Lizard

Traditional padded style in small lizard grain, a basic stylishness.

Artic Shark

A sporty style with more pronounced features in a shark grain.

REPTILE

grained leather

Pastel Gator

Large gator grain that reflects trendy fashion colors in a matt finish within a classic and elegant design.

115-329-02
D. Brown



115-329-01
Black

115-329-02
D. Brown

115-329-03
Rouille

115-329-04
D. Blue

115-329-05
Grey

115-329-06
Beige

115-329-07
P. Green

115-329-08
P. Purple

115-329-09
P. Blue

115-329-10
Pink

115-329-11
Bord

115-329-12
White

115-329-14
D. Red

115-329-15
Orange

115-329-16
Camel

115-356-04
Pink



Pastel Gator Matt

115-356-01
Black

115-356-02
White

115-356-03
P. Blue

115-356-04
Pink

115-356-05
Purple

115-356-07
D. Blue

115-356-08
Rouille

115-356-09
Chocolate

115-356-11
L. Grey

- 115-800-01
Black
- 115-800-02
D. Brown
- 115-800-03
Rustic Brown
- 115-800-04
L. Gray
- 115-800-05
L. Brown
- 115-800-07
Red
- 115-800-08
Rosa
- 115-800-09
M. Blue
- 115-800-10
L. Blue
- 115-800-11
P. Green
- 115-800-12
Blue



Lux Allig

This stylish sporty model is always in compatible with high-tech chronos.

115-800-03
Rustic Brown

- 115-261-01
Black
- 115-261-02
D. Brown
- 115-261-03
Rouille
- 115-261-05
Green
- 115-261-06
D. Blue
- 115-261-07
Yellow
- 115-261-08
Red



African Ostrich

This unique and beautiful Artisan crafted material is ideal for the spirit of jewelry timepieces.



ELEGANT
leather



15-125-06
D. Brown



15-125-01
Black



15-125-06
D. Brown



15-125-11
Rouille



Buffalo Patterned

Contemporarily flat buffalo grain that adapts well to most styles.a

Crystal Calf

Stitched round end calf. A classic style for stylish watches.

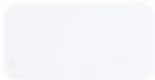
55-153-05
Bordeau



55-153-02
D. Brown



55-153-06
White



55-153-03
Tan



55-153-08
Green



55-153-04
Grey



55-153-01
Black



55-153-02
D. Brown

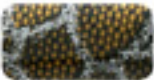


ELEGANT
leather

Diamond Moda

This unique and beautiful artisan crafted material patterned with diamond-like stripes is ideal for the spirit of jewelry timepieces.

PANC-548-01
Black



PANC-548-02
Red



PANC-548-03
Blue



PANC-548-04
Beige



PANC-548-01
Black

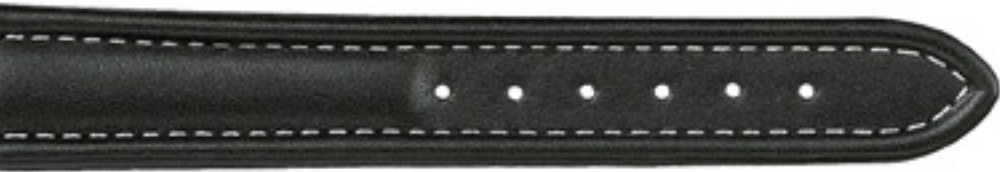


PANC-548-02
Red

Soft Leather

Straps in trendy fashion colors outlined by this simple fine soft leather in a wide array of colors.

336-01 Yellow		336-05 White		336-09 Navy Blue	
336-02 Orange		336-06 L. Blue		336-10 L. Red	
336-03 L. Pink		336-07 Green		336-11 Black	
336-04 M. Blue		336-08 Cognac		336-12 Beige	



115-336-11
Black



71C-336-10
L. Red

ELEGANT
leather

Dylan

Strap made with this modern and smooth leather is a trendy and fashionable material today.



71S-307A-01
Black



71S-307A-08
Brown



71S-307A-02
Beige



71S-307A-10
D. Pink



71S-307A-01
Black

71S-307A-07
Bordeau



71S-307A-11
Skyblue



71S-307A-12
White



Lack

Patent leather stands for beauty and innovation - a trendy and fashionable material for stylish watches.

71-136-01
Black



71-136-11
D. Blue



71-136-18
Pink



71-136-02
White



71-136-12
Yellow



71-136-19
M. Brown



71-136-04
Red



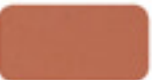
71-136-13
P. Green



71-136-20
Bord



71-136-05
Rosa



71-136-14
Beige



71-136-21
L. Red



71-136-06
L. Blue



71-136-15
P. Blue



71-136-22
M. Blue



71-136-07
L. Green



71-136-16
Orange



71-136-08
L. Grey



71-136-17
P. Purple



71-136-01
Black



Lux Buffalo

Traditional buffalo grained leather in a padded style.

71C-802-01
Black

71C-802-02
D. Brown

71C-802-03
Rosa

71C-802-04
Rouille

71C-802-05
L. Brown

71C-802-06
L. Beige

71C-802-07
Red

71C-802-08
Pink

71C-802-09
M. Blue

71C-802-10
L. Blue

71C-802-11
Purple

71C-802-12
Blue

71C-802-13
L. Green

71C-802-15
D. White

71C-802-16
Yellow

71C-802-17
D. Blue



71C-802-02
D. Brown

WP Soft Slope end

This dynamic style boosts a sporty look for high-tech chrono watches.

01SL-190-02
D. Brown

01SL-190-03
Tan

01SL-190-04
Rouille

01SL-190-05
D. Blue

01SL-190-06
Green

01SL-190-07
Red



01SL-190-06
Green



96-190-01
Black

96-190-02
Brown

96-190-03
Tan

96-190-04
Rouille

96-190-05
D. Blue

96-190-06
Green

96-190-07
Red

96-190-08
M. Blue

96-190-09
Camel



96-190-01
Black

WP Soft

Lab certified water-resistant leather. A sporty design that conveys comfort for one's wearing pleasure.

Pearlized

Unique pearl-like color is a fantastic idea to match with today's jewelry watches

71G-452-01
Black

71G-452-02
Brown

71G-452-03
L. Green

71G-452-04
Purple

71G-452-05
L. Blue

71G-452-06
Yellow

71G-452-07
Gray

71G-452-08
White

71G-452-09
Red

71G-452-10
Purple

71G-452-11
Orange

71G-452-12
Bronze



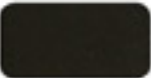
71G-452-09
Red

ELEGANT
leather

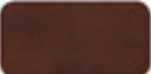
72A-217-01
Black



72A-217-01
Black



72A-217-02
D. Brown



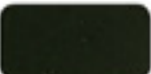
72A-217-03
L. Brown



72A-217-04
D. Blue



72A-217-05
Green



72A-217-06
Red



Vintage
Military Style

An adventurous and sporty style

ELEGANT
leather

71C-816-01
Black



71C-816-02
D. Brown



71C-816-03
Orange



71C-816-04
Red



71C-816-05
Rouille



71C-816-06
Green



71C-816-08
White



71C-816-10
D. Blue



71C-816-11
D. Grey



71C-816-12
Camel



71C-816-13
Milky



71C-816-14
P. Blue



71C-816-15
Pink



71C-816-16
Violet



71C-816-18
L. Yellow



71C-816-02
D. Brown



Matt Gemini

Unique and stylish fine
grained leather with a
matte finish

71C-464-01
Black



71C-464-01
Black



71C-464-02
D. Brown



71C-464-03
Brown



71C-464-04
D. Grey



71C-464-05
Orange



71C-464-06
Red



71C-464-07
D. Pink



71C-464-08
L. Blue



71C-464-09
Green



71C-464-10
Purple



71C-464-11
Beige



71C-464-12
Yellow



Lamb Calf

High quality calf leather in an
exquisite lamb pattern

Charly

A buffalo grained leather in contemporary style
adapted to the spirit of time.



87A-330-06
Bord



87A-330-01
Black



87A-330-02
D. Brown



87A-330-03
Rouille



87A-330-05
D. Blue



87A-330-06
Bord



87A-330-07
Green



87A-217-01
Black

87A-217-02
D. Brown

87A-217-03
L. Brown

87A-217-04
D. Blue

87A-217-05
Green

87A-217-06
Red

87A-217-02
Brown
Master



Master

A stylish yet adventurous oiled leather. This innovative and sporty strap adapts flawlessly with the sprit of time.

ELEGANT
leather

MIL Charly

Offering maximum quality and latest fashion in our exclusive selection, this military style is always in vogue with high ended chronos.

MIL-330-01 Black		MIL-330-05 D. Blue	
MIL-330-02 D. Brown		MIL-330-06 Bordeau	
MIL-330-03 Rouille		MIL-330-07 Green	



MIL-330-01
Black



71DS-217-03
L. Brown

71DS-217-01 Black		71DS-217-02 D. Brown		71DS-217-03 L. Brown	
71DS-217-04 D. Blue		71DS-217-05 Green		71DS-217-06 Red	

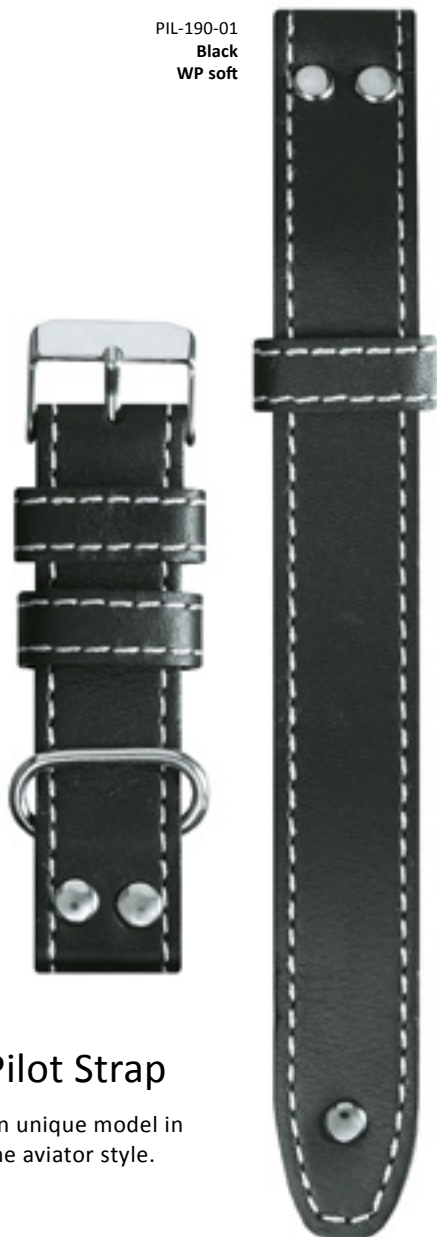
Master

Stylish yet adventurous, oiled leather is always an innovative and sporty material for the trend.



33-217-03
L. Brown

PIL-190-01
Black
WP soft



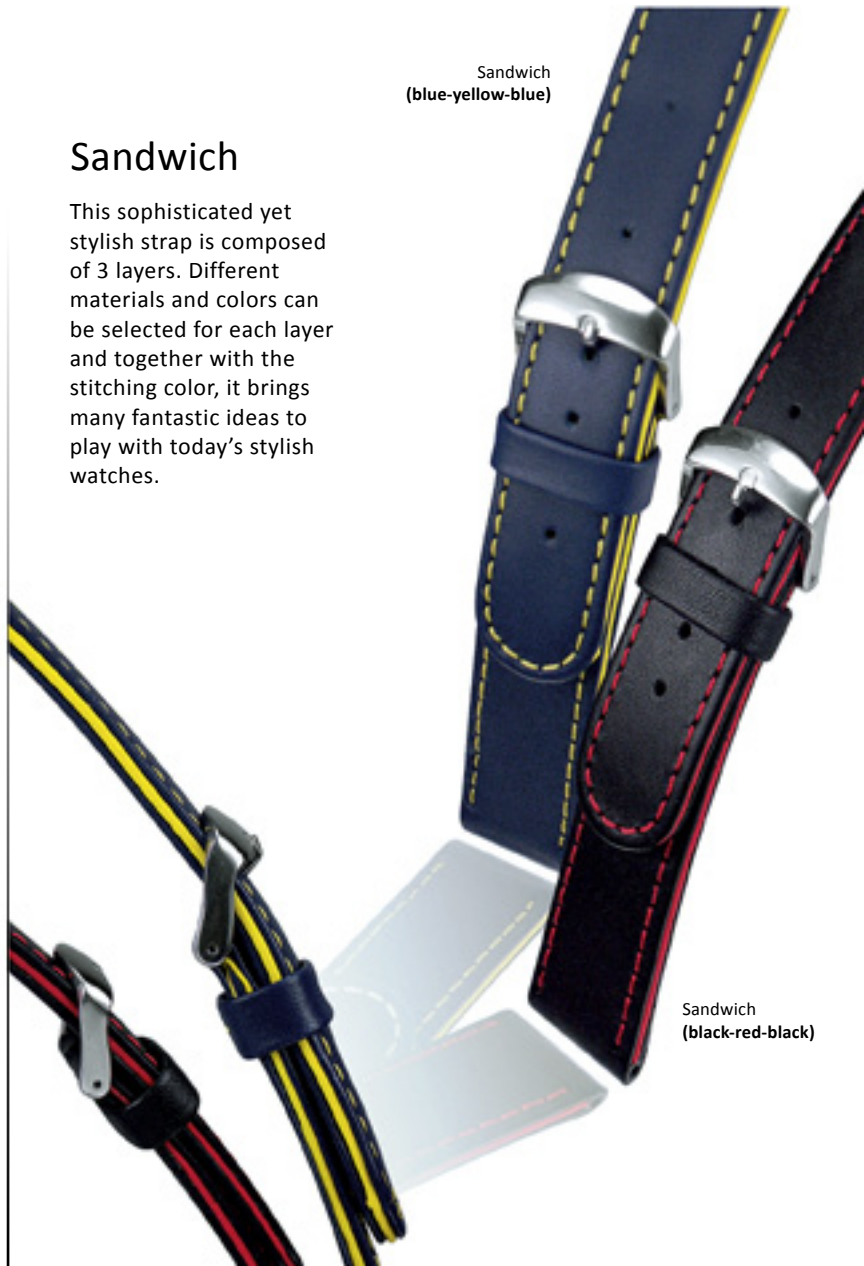
Pilot Strap

An unique model in the aviator style.

Sandwich

This sophisticated yet stylish strap is composed of 3 layers. Different materials and colors can be selected for each layer and together with the stitching color, it brings many fantastic ideas to play with today's stylish watches.

Sandwich
(blue-yellow-blue)



Sandwich
(black-red-black)

Polo Diamond

Straps reflecting trendy fashion are outlined by this textured material and contoured padding.



165-112-726
Red

- 165-112-720
Black
- 165-112-721
D. Blue
- 165-112-724
Green
- 165-112-726
Red
- 165-112-727
Orange
- 165-112-728
Yellow
- 165-112-729
D. Brown

SPECIALITY
collection

Polo Satin

- 71S-112-996
Black
Polo Smooth
- 71S-112-997
D. Gray
Polo Smooth
- 71S-112-1121
Pink
Polo Smooth
- 71S-112-1122
Gold
Polo Smooth

- 71S-112-1123
L. Gray
Polo Smooth
- 71S-112-1124
White
Polo Smooth
- 71S-112-1125
D. Brown
Polo Smooth



71S-112-997
D. Gray
Polo Satin



03I-112C-032
Khaki
Canvas

Canvas

- 03I-112C-031
Black
Canvas
- 03I-112C-034
D. Brown
Canvas



03I-549-01 Black Nylon
With Orange Stripe

- 03I-549-01
With Orange Stripe
- 03I-549-02
With White Stripe
- 03I-549-03
With Green Stripe
- 03I-549-04
With Yellow Stripe
- 03I-549-05
With Red Stripe
- 03I-549-08
With Blue Stripe

Stripe Nylon

Nylon material is a durable material and is commonly used in many military applications.

115-112-370
Black

115-112-371
D. Blue

115-112-372
Green

115-112-373
Red

115-112-374
Purple

115-112-376
Yellow

115-112-377
White

115-112-378
M. Blue

115-112-380
P. Blue

115-112-381
P. Green

115-112-382
D. Brown



115-112-370
Black

SPECIALITY
collection

Polo Flamen

Textured water-resistant material in a contoured padded with contrasted stitching.

NATO-430-03
L. Brown

NATO-430-01
Black

NATO

Made from soft and supple leather with solid stainless steel buckle and strap keepers, this one-piece long band was once used for military application.



NATO-430-03
L. Brown

Strap With AD Clasp

Deployant clasps facilitate fastening and taking off a watch and also give the watch band an additional sporty or elegant look.



115-210-01
Black
Artic Shark

RL-443-04
Black Rubber
with Brown NA Sq. Allig

Rubber & Leather
With BD Clasp

T-padded

This elegant strap appears in a heavy T-padded style.
A contemporary style adapted to the spirit of time.



03Y-254-01 Black		03Y-254-08 Rouille		03Y-254-15 White	
03Y-254-02 D. Brown		03Y-254-09 Chocolate		03Y-254-16 L. Blue	
03Y-254-03 Brown		03Y-254-10 Yellow		03Y-254-17 Sky Blue	
03Y-254-04 L. Brown		03Y-254-11 Orange		03Y-254-18 P. Purple	
03Y-254-05 Red		03Y-254-12 L. Red		03Y-254-19 Pink	
03Y-254-06 Green		03Y-254-13 Mid Blue		03Y-254-20 P. Green	
03Y-254-07 D. Blue		03Y-254-14 P. Blue		03Y-254-21 Beige	

03Y-254-08
Rouille
Nile Allig



Lux Croco

E71S-800-01 Black		E71S-800-05 L. Brown	
E71S-800-02 D. Brown		E71S-800-07 Red	
E71S-800-03 Bordeau		E71S-800-09 M. Blue	
E71S-800-04 L. Grey		E71S-800-10 L. Blue	
E71S-800-17 Pink		E71S-800-11 Pale Green / Blue	
		E71S-800-12 Blue	
		E71S-800-13 Green	
		E71S-800-14 L. Green	
		E71S-800-15 Purple	
		E71S-800-16 Tan	
		E71S-800-17 Pink	

Quick Release System

Banda’s quick release system makes changing your watchstrap easy without using any tool. Removal of a strap can be done in a blink of your eyes. Closing and opening of the spring bar is simply a push by your fingertip.



Applique

An unique model in the Race style.



APP-170-09 / 336-06
White / Blue

Solid Lug

Bracelet style strap designed to integrate with the watch case as a result the lug end is molded with the case to produce a bangle shape

SPECIALITY
collection



Contemporary Cuff Bands

These stylish yet adventurous cuff style bands adapt flawlessly with the sprit of time



CUFF-001



CUFF-002



CUFF-003

SPECIALITY collection

Contemporary
Cuff Bands

CUFF-007



CUFF-006



CUFF-005



CUFF-004



hand
STITCHED

Silicon - Straight Lines

Diver model made of Anti-allergic Silicon material.
Adjustable strap size suits large to small wrist.
(available in 20 & 22mm)



ROL-04 L. Blue



ROL-05 Orange



ROL-01 Black



ROL-12 Gray

ROL100-01
Black
(available in 22 & 24mm
and other colors as well)



PAN-001-BLU
D. Blue



Pan Style

(available in 24mm only)



PAN-001-RED
Red

SPECIALITY
collection

Deployant Straps



DFPB
New Double
deployment with
push button release

M1
Single
Deployment

DF
Double
Deployment

Deployment Buckles

Stainless Steel Deployment Buckles - Made in solid stainless steel, single and double folding, polished or satin.



AD



DFPB - Rose Gold



DFPB - Gold



DFPB - pvd Black

SPECIALITY collection

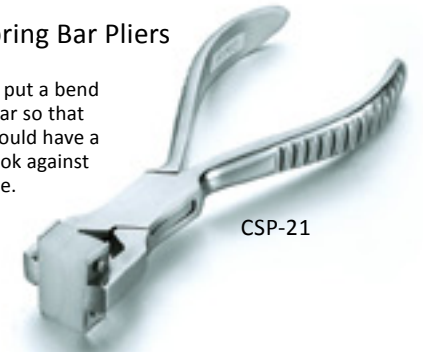
Buckles



Accessories

Curved Spring Bar Pliers

Allows you to put a bend on in spring bar so that your straps would have a more fitted look against the watch case.



CSP-21

Spring Accurated Hole Punch

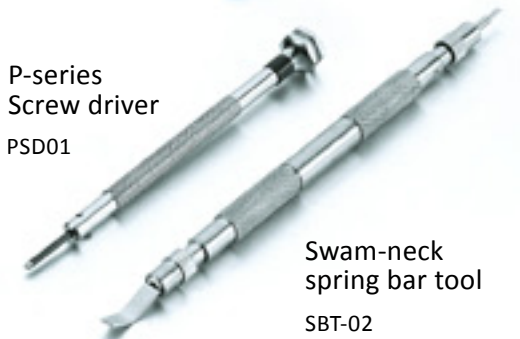
- Cut extra holes for watch straps - nice & clean
- No hammer need. Just press on handle and bit rotates automatically until it clicks
- 2 bits for each diameter of 1.5mm, 2mm & 2.5mm



HP001

P-series Screw driver

PSD01



Swam-neck
spring bar tool
SBT-02

Various Linings



SPECIALITY
collection



WOODEN DISPLAY

Our unique and elegant wooden displays represent some of the finest designs in the luxury watch strap retailing industry. They are handsome tools that will surely increase sales while adding a touch of glamour to the jewelry stores.



WD-13
M:350 x 350 x 570mm (H)



WD-12
M:470 x 320 x 385mm (H)

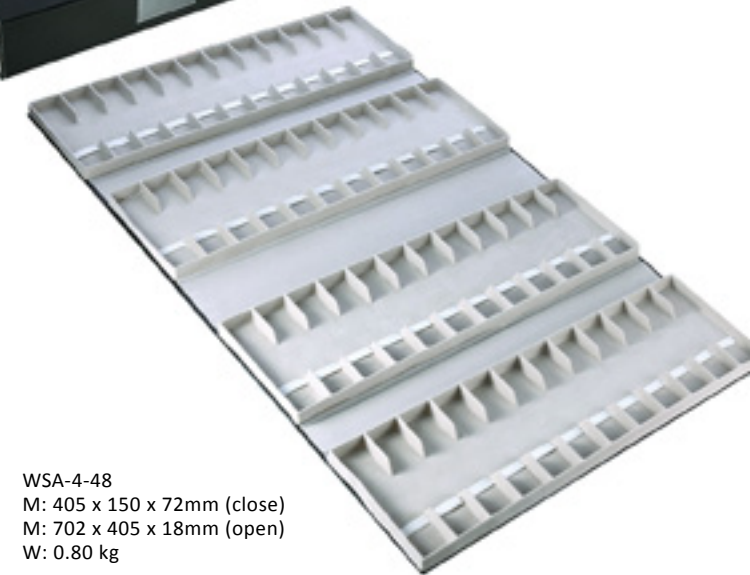


Watch Strap Display Case

Each case has 4 trays, each holds 12x22mm straps, total 48 straps



WS-48
M: 340 x 185 x 100mm
W: 2 kgs



WSA-4-48
M: 405 x 150 x 72mm (close)
M: 702 x 405 x 18mm (open)
W: 0.80 kg



WSA-2-24
M: 405 x 150 x 40mm (close)
M: 32 x 405 x 18mm (open)
W: 0.50 kg

Banda

www.banda.com.hk



BANDA BRACELETS (HK) LTD.

BANDA - HONG KONG

9/F., Block B1&B3,
28-36 Kwai Fung Crescent, Yip Fung Ind.Bldg.,
Kwai Chung, N.T. Hong Kong
Tel +852 2428 6911 Fax +852 2420 0864
URL: <http://www.banda.com.hk>
URL: <http://www.banda.com>
Email: info@banda.com